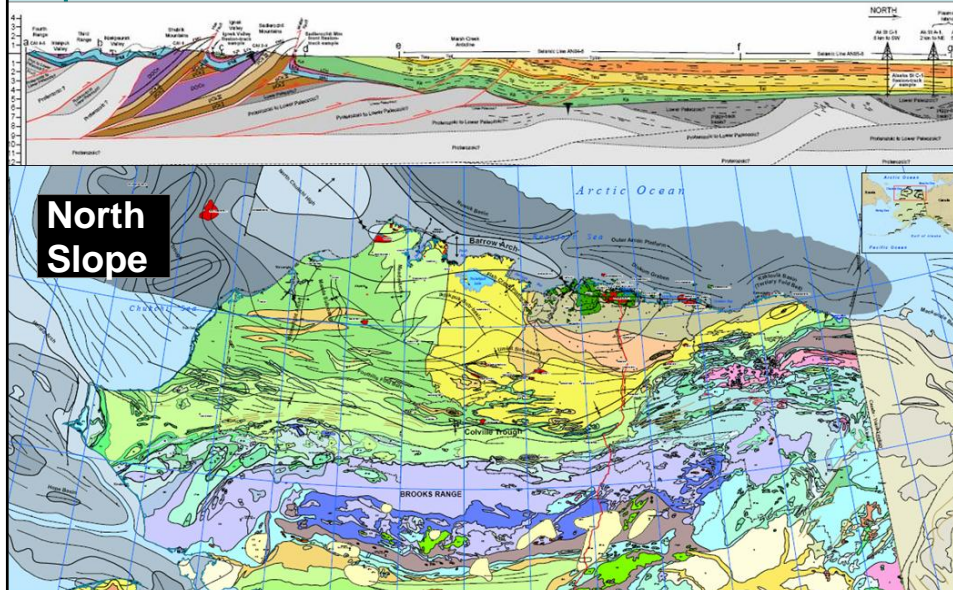


- *Franlinian* – stable continental shelf “basement” with poor reservoir quality.
- *Ellesmerian* – Jurassic passive margin, clastics & carbonates, excellent reservoirs, good seals.
- *Beaufortian* – K/Jr, good reservoirs such as Kuparuk and Kingak SS.
- *Brookian* – K/Jr, transgressive, ss to sh, imbricate thrusts, few good reservoirs.



Cook Inlet

- Active mainly offshore oil and gas region
- Close to Anchorage
- Excellent data sets
- Also large CBM resources



