




WESTCARB Annual Business Meeting

Climate Projects and Protocols

Robyn Camp
California Climate Action Registry
info@climateresistry.org



*Phoenix, AZ
November 9, 2006*



California Climate Action Registry

- Nonprofit created by California legislation
 - Encourages voluntary public reporting and early actions for reduction
 - Companies can establish a state-recognized baseline
 - Board appointed by Governor and legislature
- Operations began in 2001
 - Created accounting and verification standards
- Charter members joined in 2002

WEST COAST REGIONAL CARBON SEQUESTRATION PARTNERSHIP



Goals of the CA Registry

- Help companies and organizations establish GHG emissions inventories and baselines against which any future GHG emission reduction requirements may be applied
- Encourage voluntary actions to decrease GHG emissions



Business Benefits of Joining?

- Protection for early action
- Prepare for trading
- Access to CARROT
- Build environmental reputation
- Protection from shareholder resolutions
- Branding as “Climate Action Leader”



Select CA Registry Members

Oil/Gas

BP
Shell
THUMS
Tidelands

Electric Power

Calpine Corporation
Pacific Gas and Electric
PacifiCorp
Reliant Energy
West Coast Power

Solid Waste

Waste Management, Inc.

Telecommunications

AT&T
QUALCOMM
Verizon

Manufacturing

Eastman Kodak
Corning
Hewlett-Packard
XEROX

Mining

Rio Tinto Minerals

Forest

CA Department of Forestry & Fire Protection
Collins Pine
The Conservation Fund
The Pacific Forest Trust
The Van Eck Foundation

Government

City of Los Angeles
City of San Francisco
City of Sacramento

Education

UC San Diego
UC Santa Barbara
Los Angeles Community College District

99 members total



GHG Reporting and Certification Principles

- **Completeness**
- **Consistency**
- **Comparability**
- **Accuracy**
- **Transparency**



Annual Entity-Wide Reporting

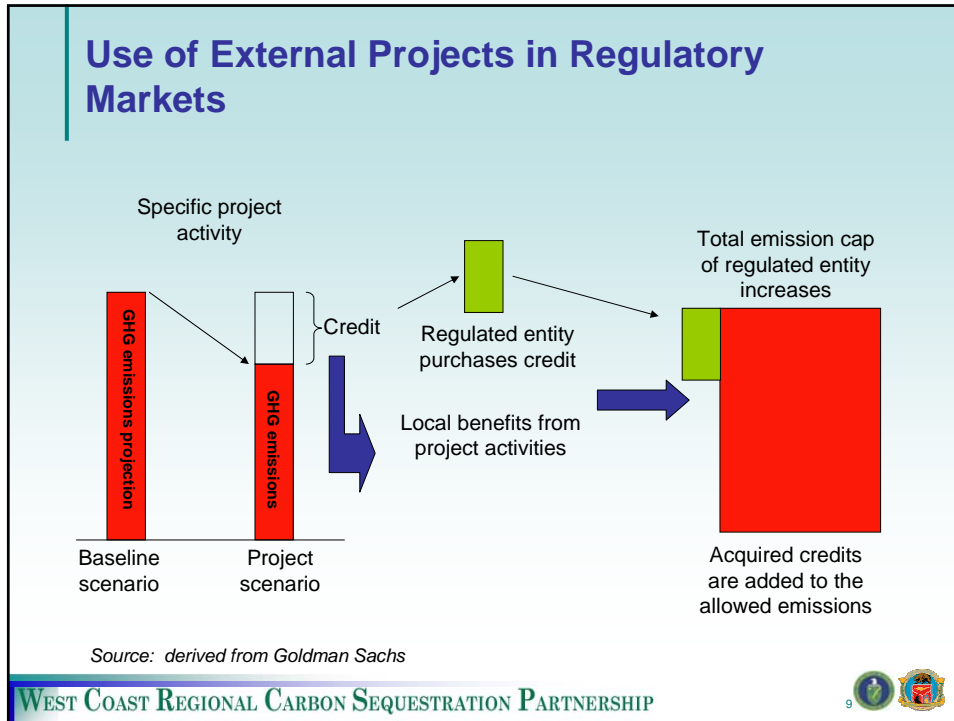
1. **Annual Inventory** following CA Registry protocols
 - CO₂ (Years 1-3), then all 6 Kyoto gases (CO₂, CH₄, N₂O, HFCs, PFCs, SF₆)
 - Direct stationary, mobile, process and fugitive emissions
 - Gasoline, diesel, natural gas bills
 - Indirect emissions from electricity and steam purchases
 - California, US or world-wide reporting
2. **Certify** emissions inventory results using CA Registry- and State of California-approved certifiers
3. **Report** using CA Registry's web-based tool, CARROT



Emission Reduction Projects

- **Project**
 - A planned set of activities that removes, reduces, or prevents CO₂ emissions in the atmosphere
- **Forest Project**
 - A planned set of activities that conserve and/or increase on-site forest carbon stocks
 - Measure and monitor GHG reductions resulting from specific forest activities
- **Project Types**
 - Conservation-based forest management
 - Reforestation
 - Conservation



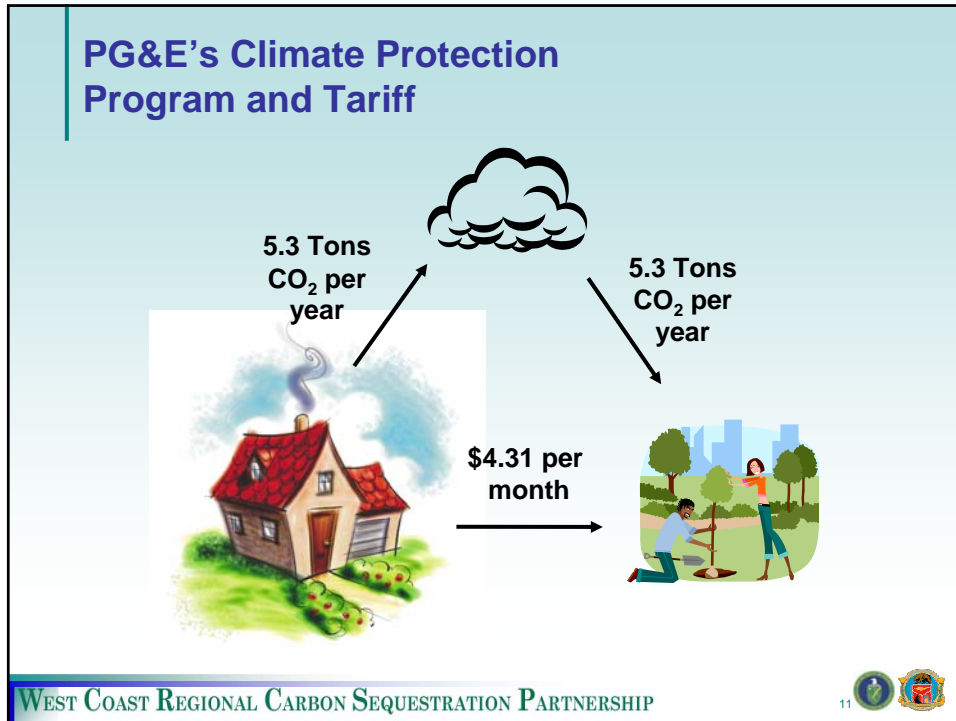


Emerging Sources of Demand

- Future Regulatory Markets
 - RGGI (Northeastern states)
 - California cap and trade
 - Federal??
- Voluntary Markets
 - Bilateral purchases
 - Climate neutral companies and products
 - Global voluntary frameworks

WEST COAST REGIONAL CARBON SEQUESTRATION PARTNERSHIP

10



- ### Projected CPT Impacts
- 4-5 % customer enrollment by the end of the third year
 - 20,000 gas customers
 - 25,000 electric customers
 - \$20 million in emission reduction project investments over the first three years
 - Estimated carbon savings of approximately 2 million tons at the end of the third year- -equivalent of taking 350,000 cars off the road for a year
- WEST COAST REGIONAL CARBON SEQUESTRATION PARTNERSHIP
- 12

Contact Information

California Climate Action Registry
515 S. Flower St.
Suite 1640
Los Angeles, CA 90071
213-891-1444

info@climateregistry.org
www.climateregistry.org