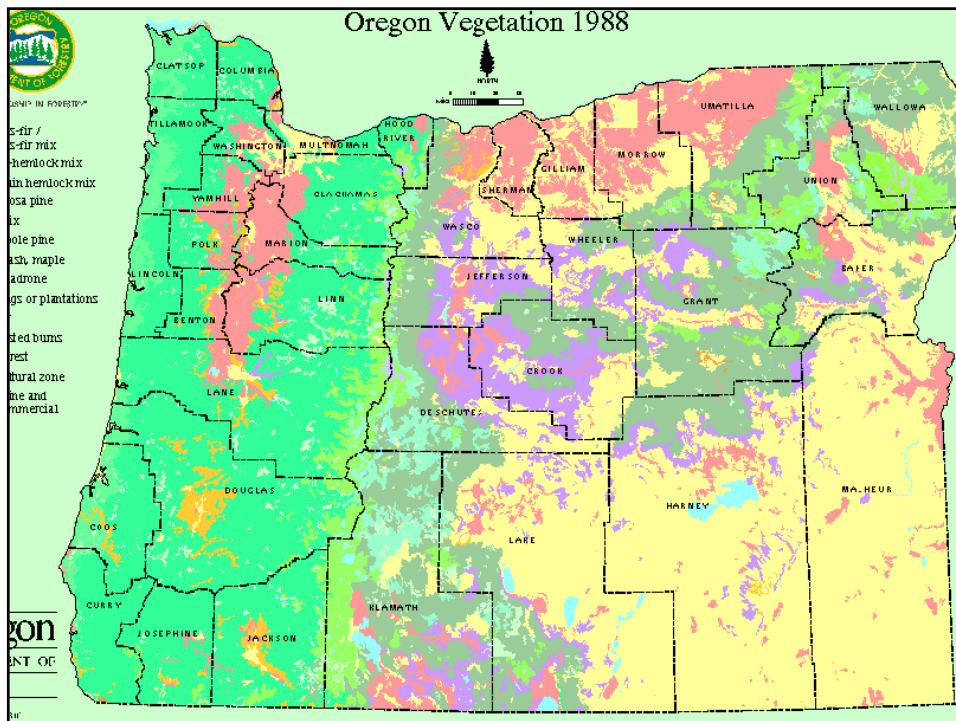




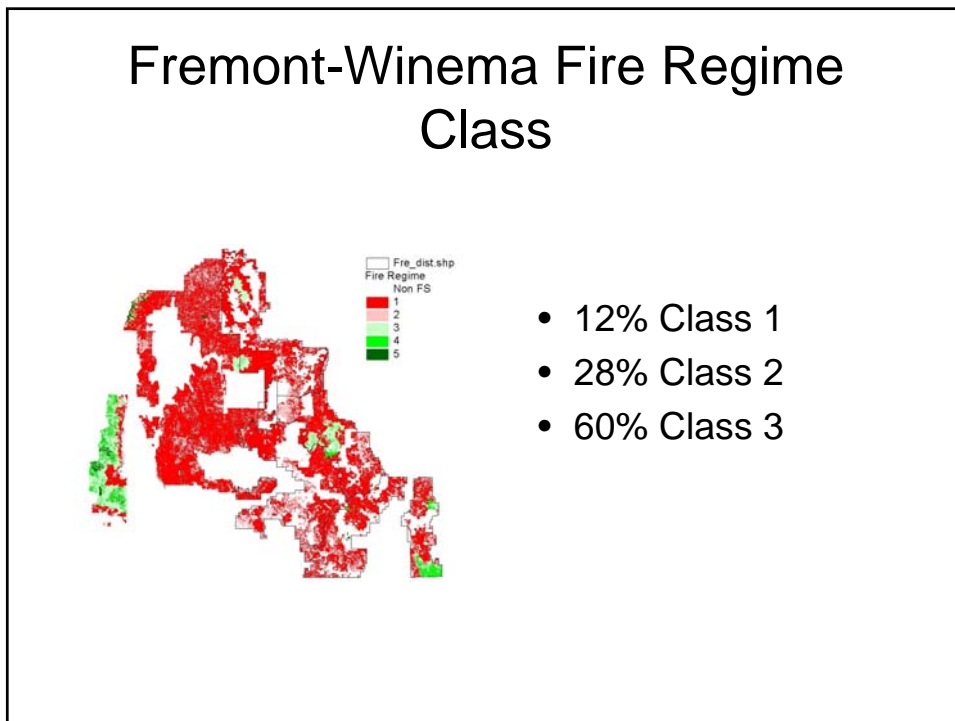
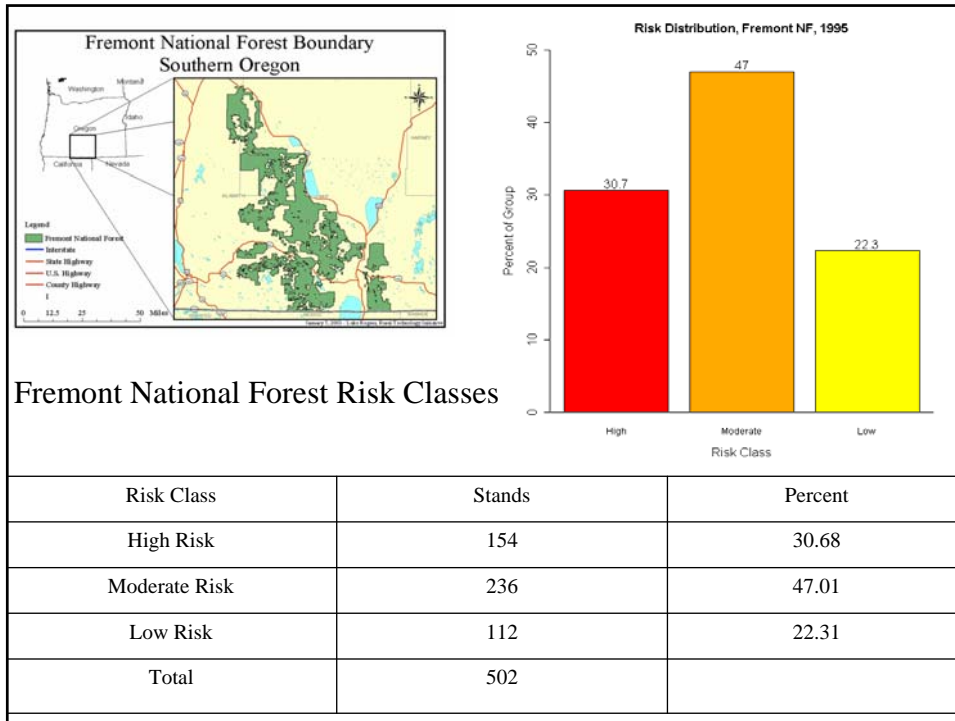
WESTCARB Annual Business Meeting

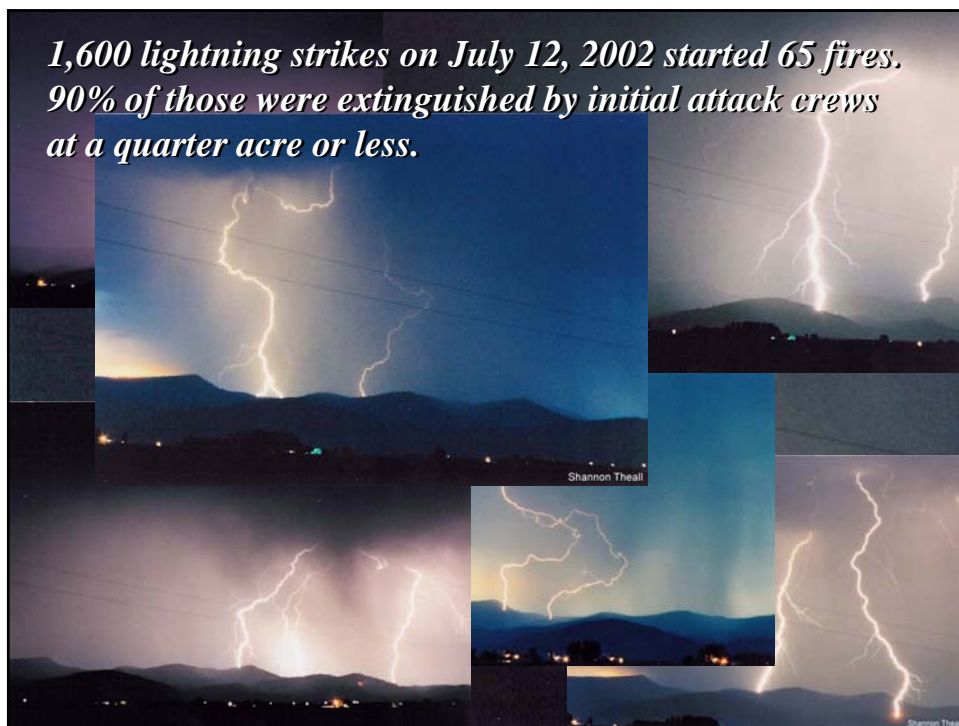
Hazardous Fuel Reduction on Federal and Private Lands and Prospects for a Biomass Power Plant in Lake County, OR

Jim Walls
Executive Director,
Lake County Resources Initiative
jwalls@gooselake.com

*Phoenix, AZ
November 9, 2006*







Biomass Plant



<http://www.lcri.org>

LAKEVIEW
Stewardship Group

Lakeview Biomass Feasibility Report 2004



Biomass Profitability

- 10-year Stewardship Contracts – goods for services
- Federal Renewable Energy Production Credits
- Carbon credit sales

 LAKEVIEW
Stewardship Group

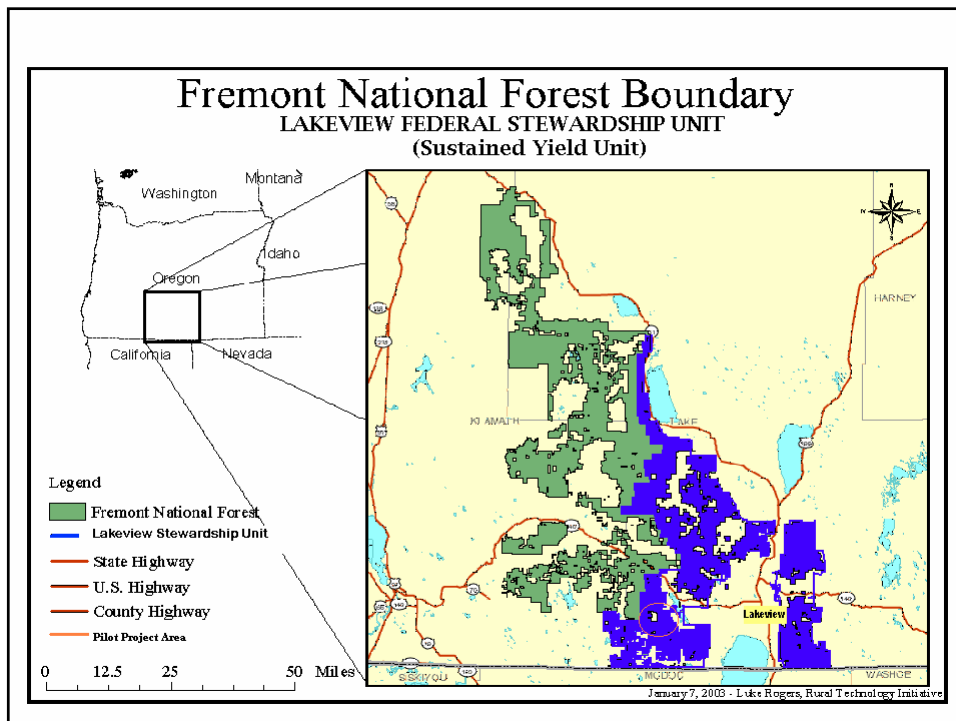
Lakeview Stewardship Group






Long-Range Strategy for the Lakeview Federal Stewardship Unit (LFSU)

Water Fish and Wildlife, Wilderness and
Roadless Areas Recreation Community
Benefits Forest Restoration



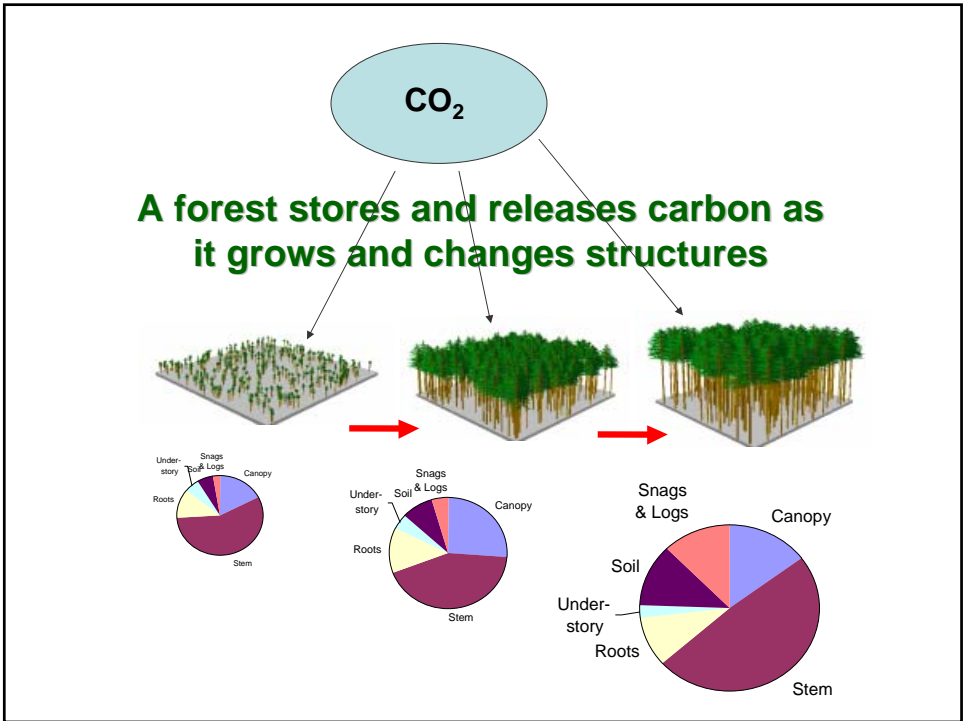
Forests sequester carbon in several ways

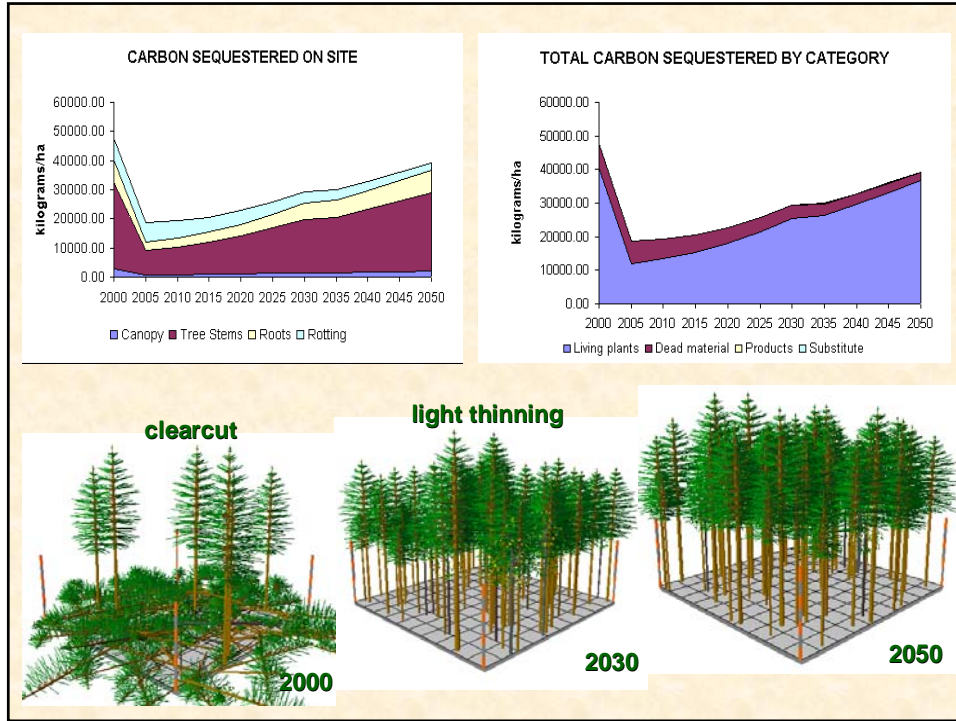


Standing forest
1

Forest products
2

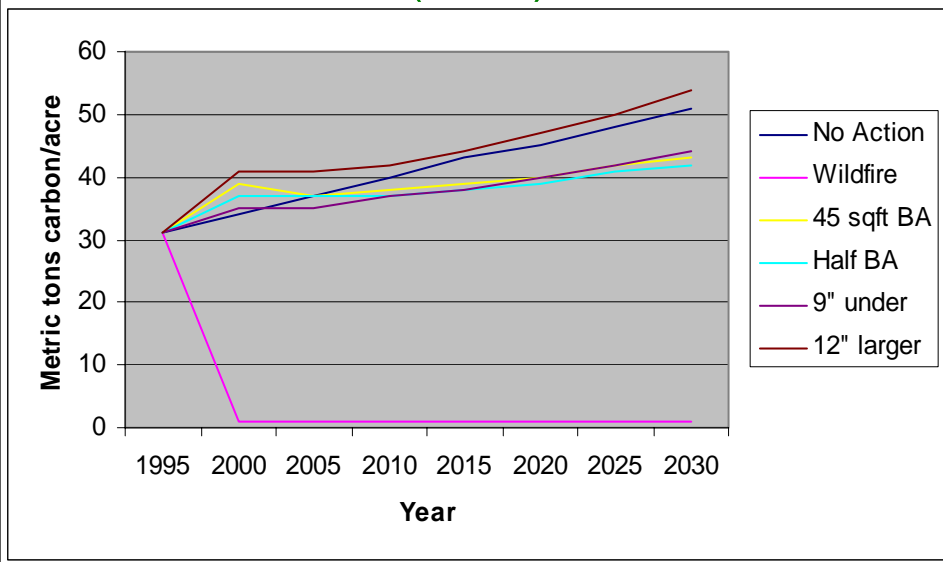
Fossil fuel conservation
3

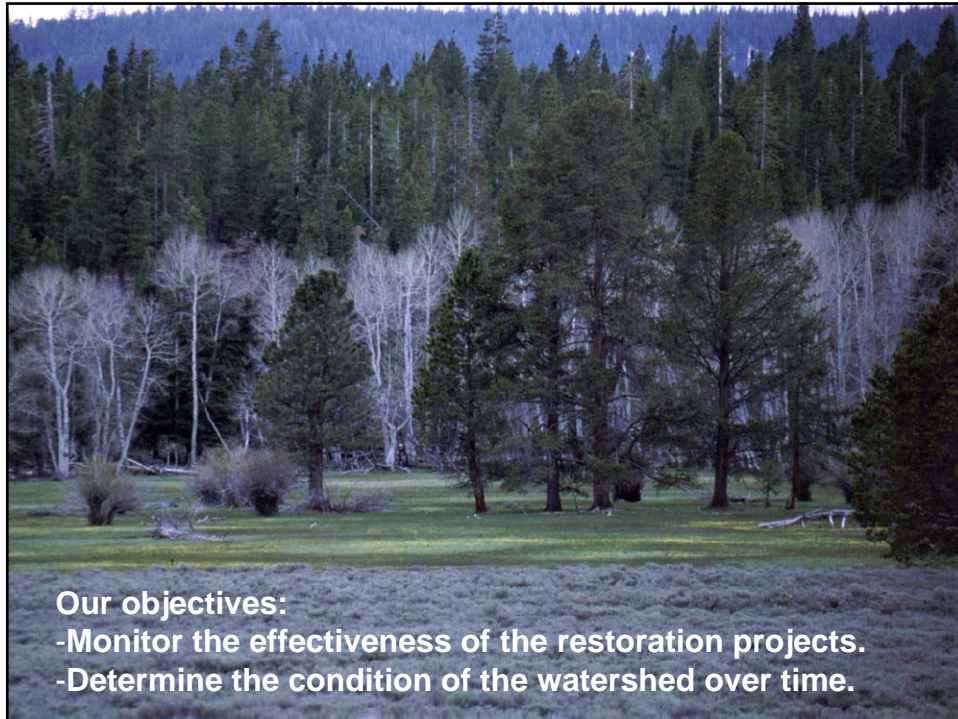




Thin to Basal Area 45 square feet	1995	2000	2005	2010	2015	2020	2025	2030
Forest	31	20	20	21	23	24	26	28
Products – Lumber	0	4	4	4	4	4	4	4
Products – Chips	0	3	2	1	1	0	0	0
Products – Hogfuel	0	4	2	1	1	1	0	0
Harvesting and Manufacturing Emissions	0	-2	-2	-2	-2	-2	-2	-2
Displacement (by burning hogfuel)	0	2	2	2	2	2	2	2
Substitution (by using lumber not concrete)	0	10	10	10	10	10	10	10
Total (with Displacement, without Hogfuel)	31	39	37	38	39	40	42	43

Landscape Management System (LMS)





WESTCARB – Lakeview Project

- Coordinate fuel treatments on Forest Service, Collins Companies, and Jeld-Wen forestlands
- LCRI monitoring crew collect data on treatments and previous fires
- Liaison with Forest Service, environmental groups, and industry
- Economic analysis of fuel transport for biomass
- Long-term MOU for sustainable supply



Contact Info

Jim Walls

Executive Director

Lake County Resources Initiative

(541) 947-5461

jwalls@gooselake.com