


WEST COAST REGIONAL CARBON SEQUESTRATION PARTNERSHIP
westcarb.org




WESTCARB Annual Business Meeting



Hazardous Fuel Reduction and Biomass Energy Pilot Activities in Shasta County, CA

Nicholas Martin
Winrock International
nmartin@winrock.org

Phoenix, AZ
November 9, 2006




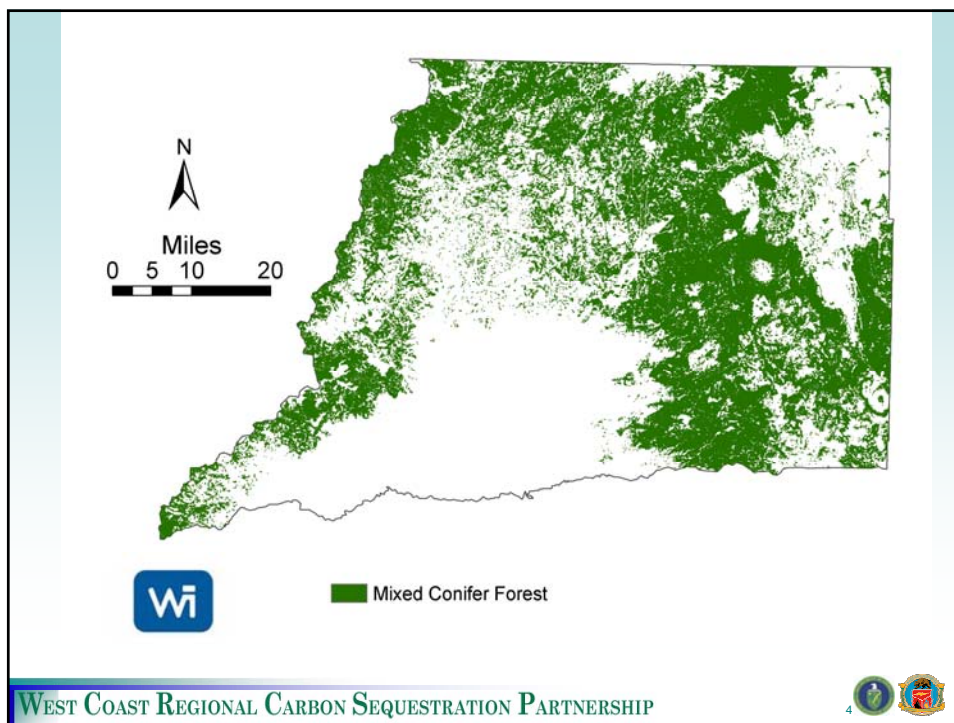
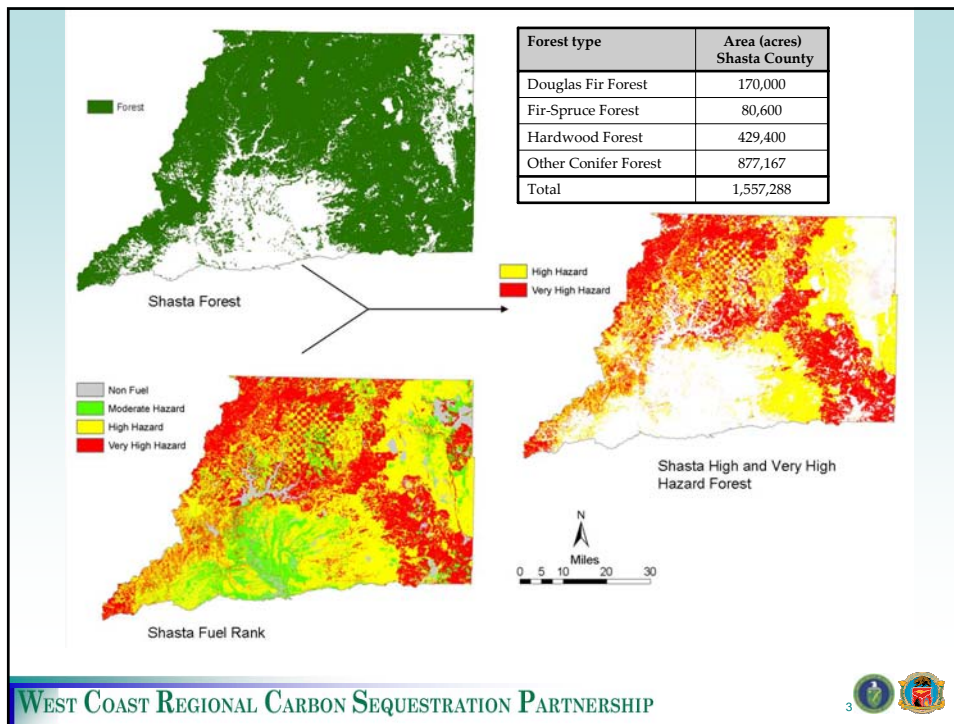
Improved Management of Forest Fuels

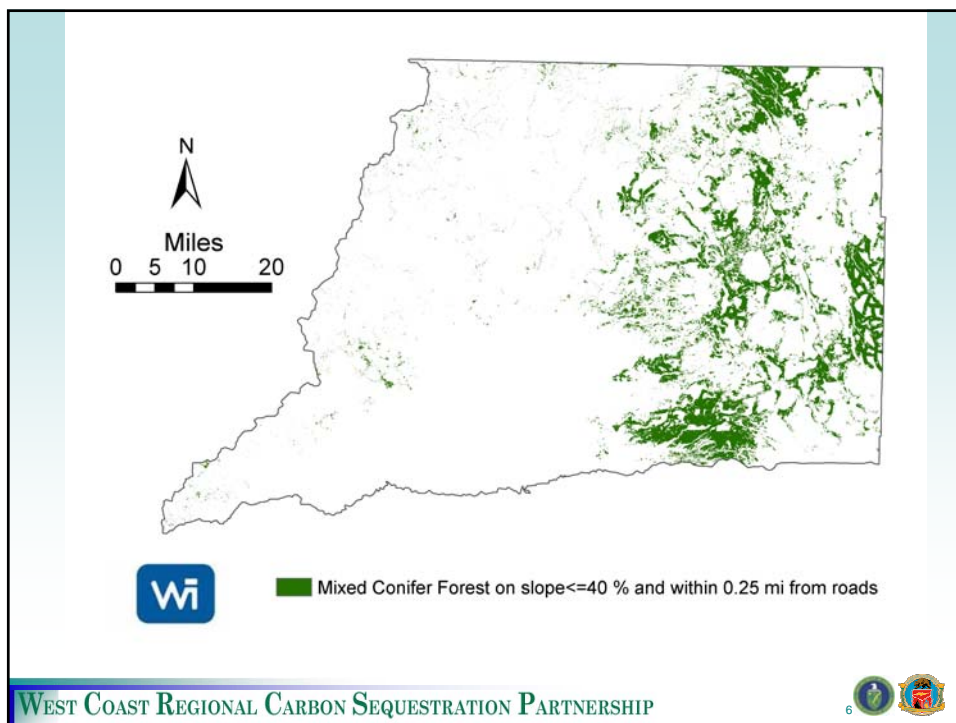
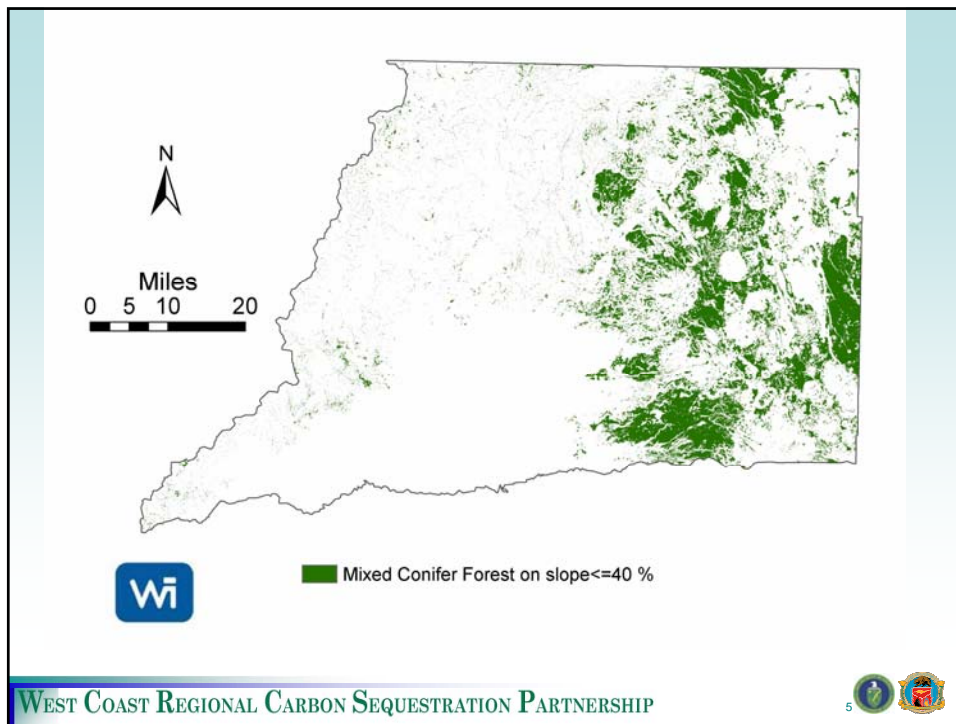


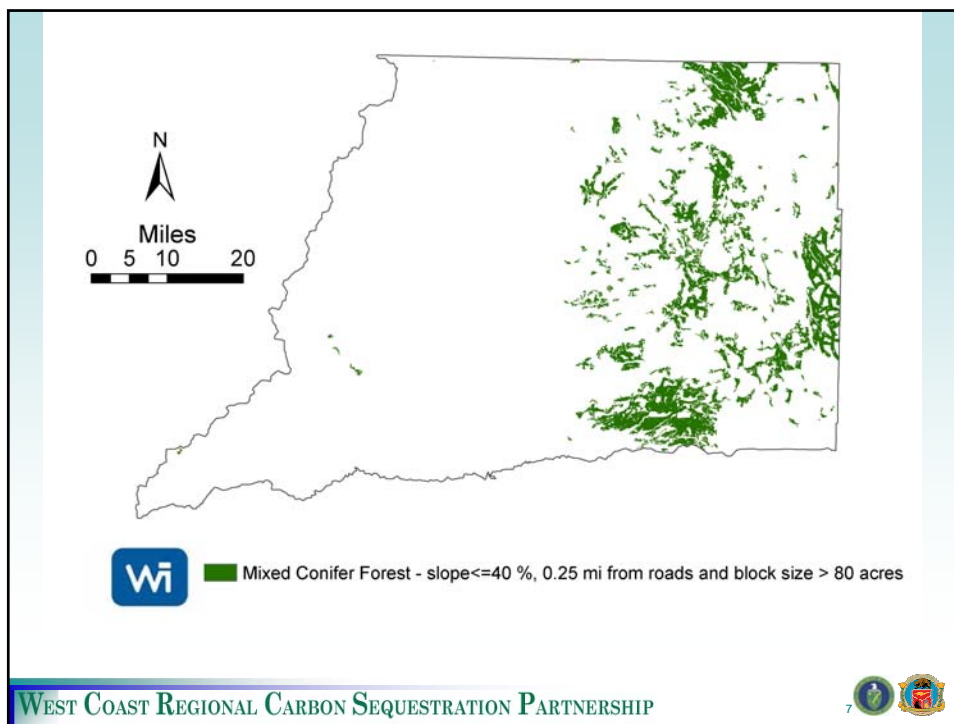
Sam Sandberg, USDA Forest Service

WEST COAST REGIONAL CARBON SEQUESTRATION PARTNERSHIP









Results for Shasta County

Shasta County	
Forest land at high or very high risk of fire (acres)	1,410,000
High or very high fire risk land that satisfies constraints (acres)	215,000
Potential removable fuel based on field data (BDT biomass/acre)	23
Total removable fuel from treatable land (BDT biomass)	5 million

Understory Fuel Loads in Shasta



WEST COAST REGIONAL CARBON SEQUESTRATION PARTNERSHIP



Revenues from Carbon?

"Subsidy" required	\$2.40/t CO ₂		\$10/t CO ₂	
	t CO ₂ /ac	t C/ac	t CO ₂ /ac	t C/ac
\$274/ac	115	31.2	27	7.5

- Baseline emissions from fires across all forest types = 17 t C/ac (range 15–32 t C/ac)
- Carbon in litter and duff = 9 t C/ac

WEST COAST REGIONAL CARBON SEQUESTRATION PARTNERSHIP

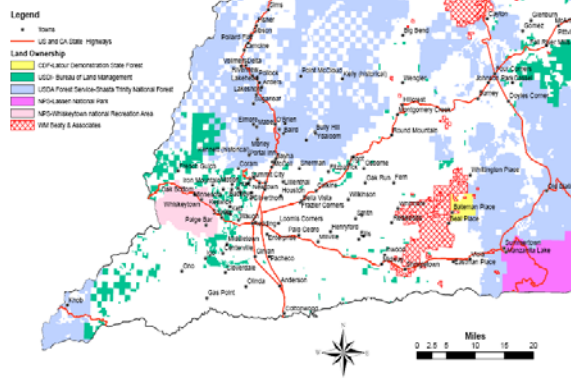


Phase II Activities—Improved Fuels Management

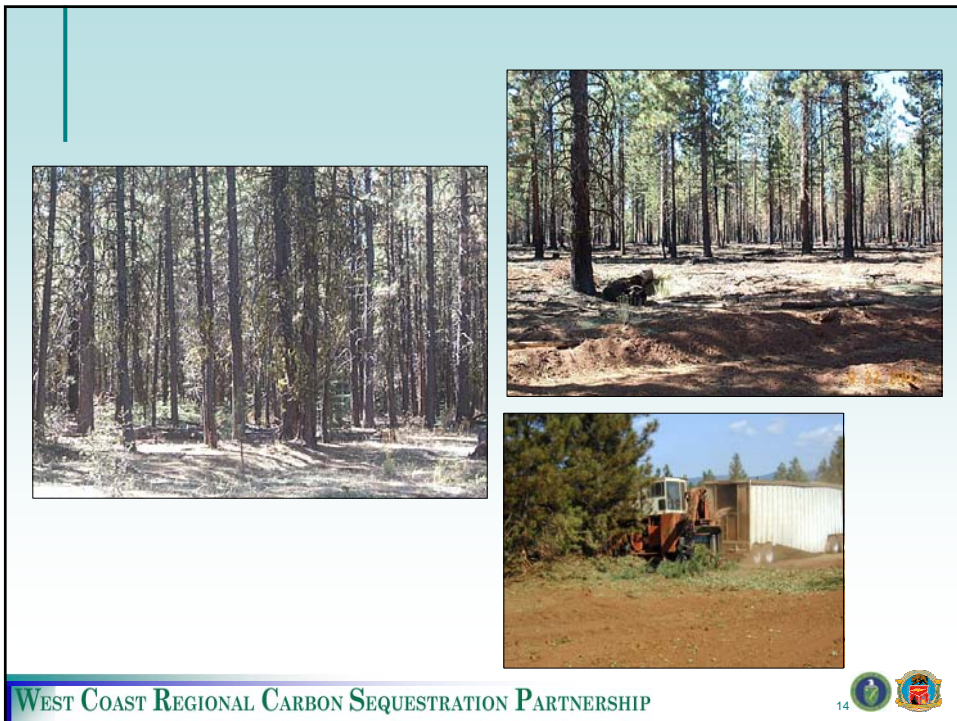
- Develop methodology for carbon credits from reducing hazardous fuels
- Validate methodology with field data
- Carry out treatments
- Measure carbon stocks and removals
- Collect data on treatment costs
- Transport fuels to Wheelabrator
- Estimate fossil fuel displacement benefits

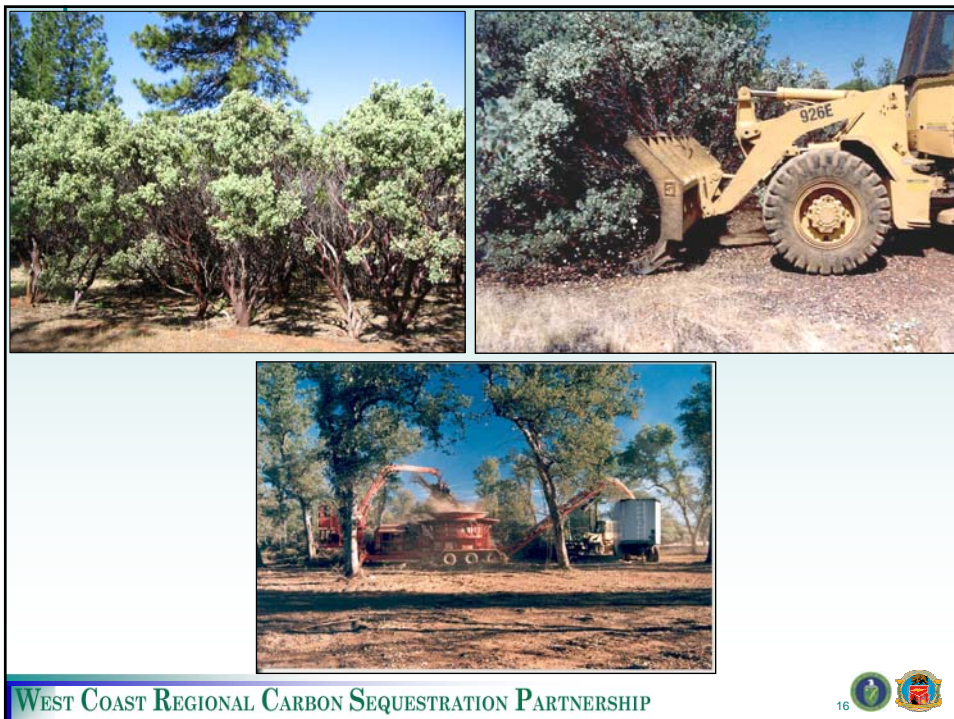


- Western Shasta RCD
- WM Beaty & Associates
- California Department of Forestry and Fire Protection
- USDA Forest Service
 - Shasta Trinity National Forest
 - Lassen National Forest
 - Pacific Southwest Research Station
- National Park Service
 - Whiskeytown National Recreation Area
 - Lassen Volcanic National Park



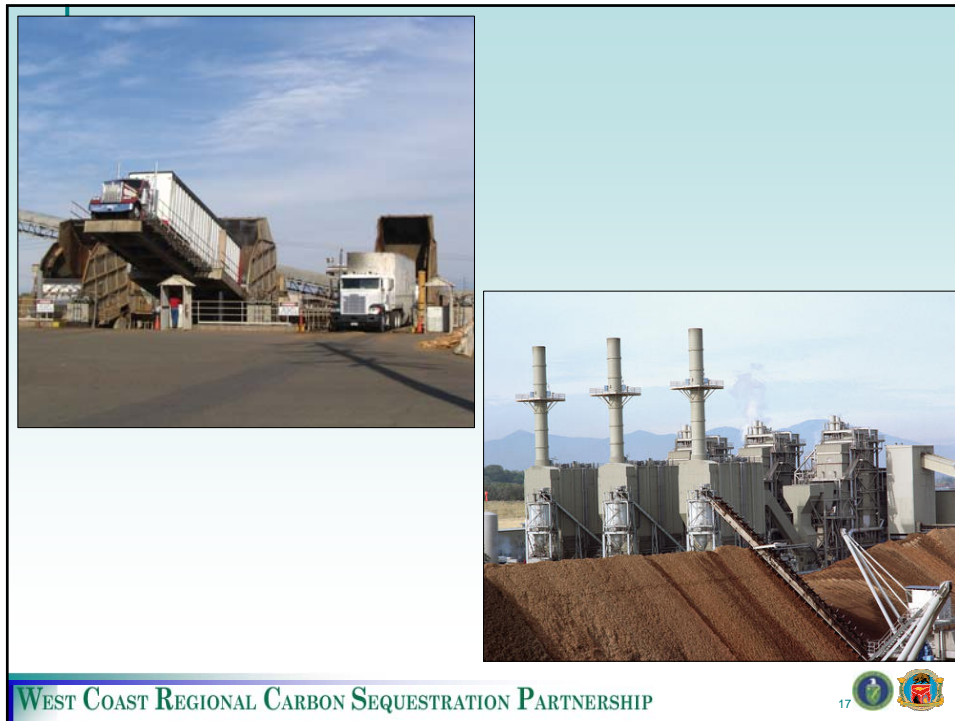
- USDI Bureau of Land Management
- Pacific Gas & Electric
- Individual forest land owners
- Wheelabrator Shasta Energy Company



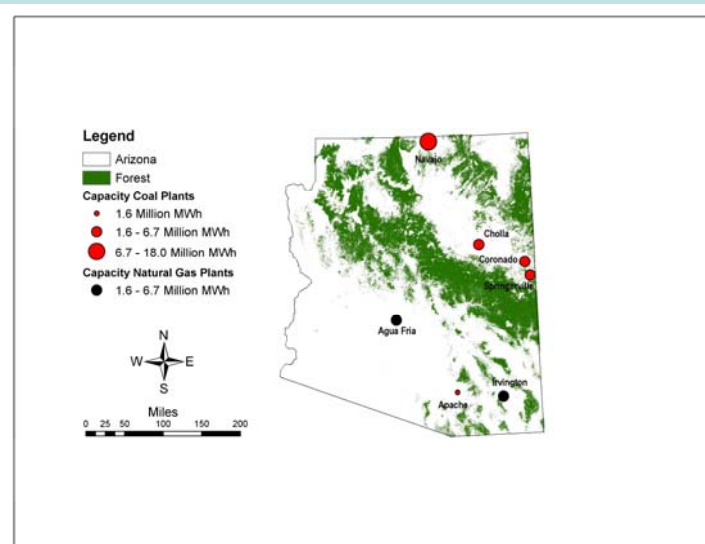


WEST COAST REGIONAL CARBON SEQUESTRATION PARTNERSHIP





Arizona Forest Lands and Coal-fired Power Plants



Contact Info

Nicholas Martin
Program Officer
Forestry, Energy & Ecosystem Services
Winrock International
(510) 620-9901
nmartin@winrock.org