



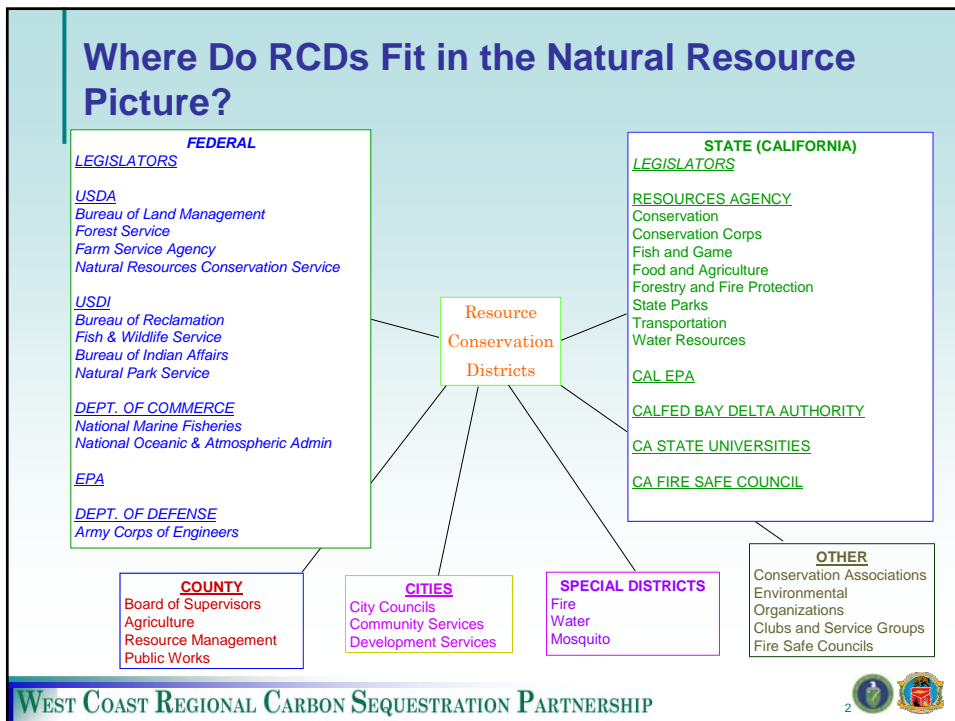


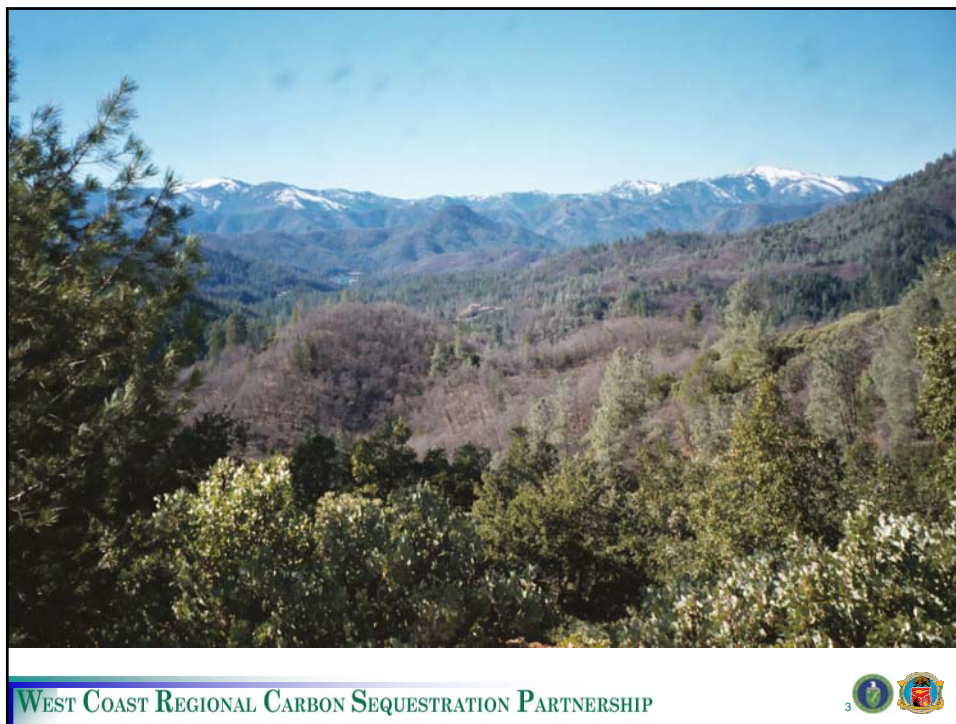
## WESTCARB Annual Business Meeting

### WSRCD Forest Fuels Reduction Pilot Activities

**Leslie Bryan**  
Watershed Coordinator  
Western Shasta Resource Conservation District  
leslie@westernshastarc.org

Phoenix, AZ  
November 9, 2006



## Roadside Fuelbreak



WEST COAST REGIONAL CARBON SEQUESTRATION PARTNERSHIP



5

## Ridge Top Fuelbreak



WEST COAST REGIONAL CARBON SEQUESTRATION PARTNERSHIP



6

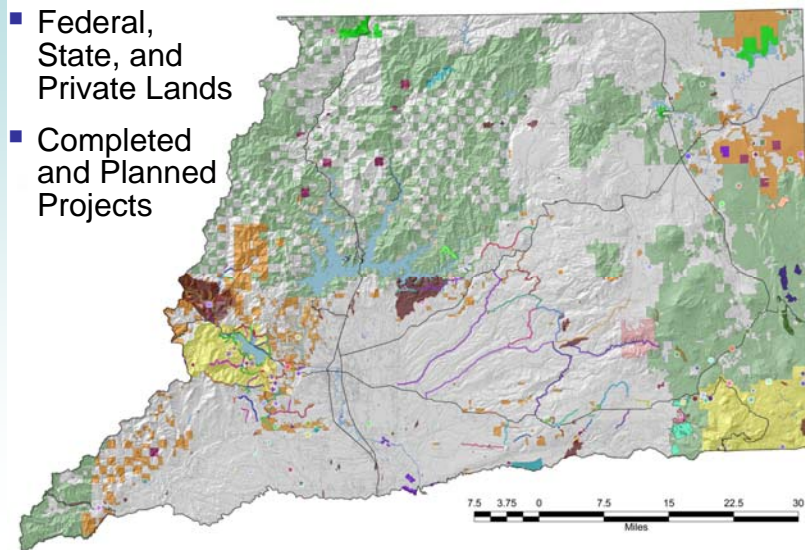
## Forest Fuels Reduction Strategy—Not a Linear Process

- Develop GIS-Based Shasta County Fuels Treatment Map
- Consult Existing Data
- Perform Education and Outreach
- Validate Projected Carbon Benefits



## Shasta County Fuels Treatment Map

- Federal, State, and Private Lands
- Completed and Planned Projects



## Consult Existing Data

- Individual Watershed Strategic Fuel Management Plans Developed on a Watershed or Community Basis
- Shasta County Community Wildland Protection Plan—Dovetails into the Statewide Fire Protection Plan, and Federal Wildfire Protection Goals
- Project Fuel Utilization for Energy Logging (F.U.E.L.) Biomass Report—Biomass Utilization Study
- Watershed Information Model (WIM)—Interactive Geodatabase (<http://wim.shastacollege.edu>)



## Perform Outreach and Education

- Shasta County and Local Fire Safe Councils
- Public and Private Land Managers
- Fire Safe Councils and Watershed Groups
- Ongoing Events



## Validate Projected Carbon Benefits

- Establish and Utilize Technical Panel
  - Select Current Project Opportunities for Inclusion in Pilot
  - Identify Areas for Proposed Pilot Projects
- Identify and Recruit Willing Landowners