



WESTCARB Regional Partnership

WESTCARB Regional Technology Implementation Plan—A Commercialization Visioning Group Exercise

Rich Myhre
Vice President, Bevilacqua-Knight, Inc.
WESTCARB Outreach Coordinator
(510) 444-8707, x220; rmyhre@bki.com

October 19, 2010



What's a Regional Technology Implementation Plan (RTIP)?

- DOE: A roadmap for the future wide-scale deployment of carbon sequestration in the West Coast region
- Our approach: Link technical vision and policy out to 2050; integrate with state and regional energy and climate policy frameworks (e.g., AB 32, Western Climate Initiative)
- Input from stakeholders via breakout sessions at 2010 WESTCARB Annual Meeting (and reference solicitation)
- Build on related efforts—California CCS Review Panel, E3 report on meeting California targets for 2020 and 2050

How is the RTIP different from other visioning exercises?

- Many visioning exercises concentrate on getting to the point of commercialization/early market entry, to a given near- to mid-term year (e.g., 2020), or to technology performance goals believed to yield self-sustaining commercial markets
- Longer-term exercises, such as the Princeton wedges, tend to focus on trade-offs among CO₂ emissions reduction technologies and reinforce the need for a full portfolio of solutions
- ***We're trying to capture the logical sequence of steps and the evolutionary phases of commercial CCS application (geologic and terrestrial) to 2050***



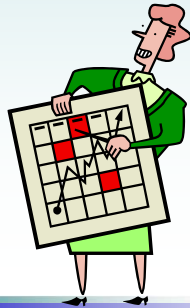
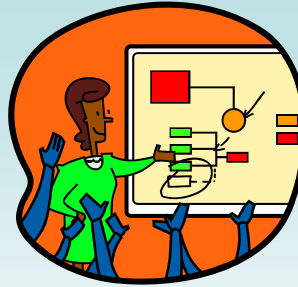
RTIP breakout topics

- CO₂ capture process evolution, market penetration, and the western network
- Geologic storage—risk assessment and induced seismicity
- Geologic storage—evolution of MVA and post-closure environmental stewardship
- Carbon accounting and emissions reduction regulatory compliance
- Beneficial reuse of CO₂—including EOR/EGR
- CO₂ project finance
- Terrestrial sequestration—forestry projects, biomass power, etc.



How are we going to do it?

- Vision building as each table becomes regional energy czar for a day on their topic
- Multiple/alternate paths OK if not complete consensus



- Map vision to timeline (2010 to 2050); sequence more important than dates
- Report out and discuss
- WESTCARB synthesizes results