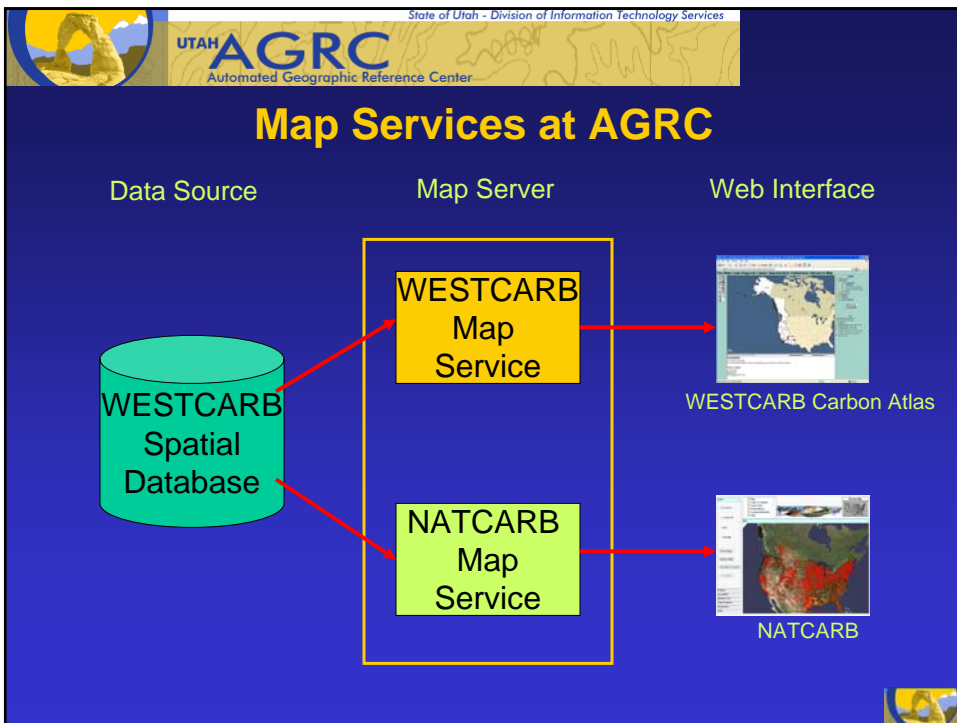


State of Utah - Division of Information Technology Services

UTAH **AGRC**  
Automated Geographic Reference Center

## The WESTCARB Interactive Map / Data Sharing with NATCARB

Barry Biediger  
November 9, 2005






State of Utah - Division of Information Technology Services

UTAH **AGRC**  
Automated Geographic Reference Center

## Map Functionality

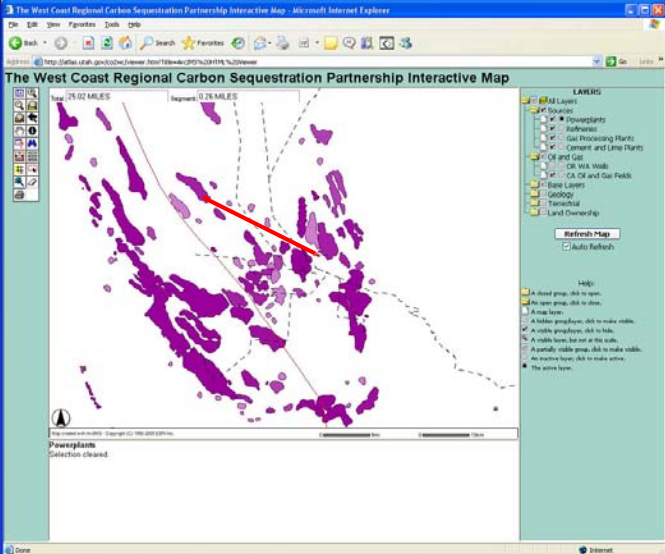
- Navigation
  - Zoom in, out
  - Pan
  - Zoom to layer
- Measurement
  - Linear distance
  - Buffer
- Query
  - Identify
  - SQL query
  - Find
- Create a Printable Map



State of Utah - Division of Information Technology Services

UTAH **AGRC**  
Automated Geographic Reference Center

## Linear Distance Tool



The screenshot displays the 'The West Coast Regional Carbon Sequestration Partnership Interactive Map' in a Microsoft Internet Explorer browser window. The map shows several purple shaded regions representing carbon sequestration potential. A red line is drawn across the map, and a measurement tool is active, showing '26.02 MILES' and '34.26 MILES'. The interface includes a toolbar on the left, a legend on the right, and a status bar at the bottom.

State of Utah - Division of Information Technology Services

UTAH **AGRC**  
Automated Geographic Reference Center

## Buffer Tool

The West Coast Regional Carbon Sequestration Partnership Interactive Map

Buffer

Highlight features from: CA Oil and Gas Fields within a distance of 10 MILES around the specified features of CA Oil and Gas Fields

Create Buffer

Map: 507823.27, -10902.23 - Image: 911, 147 - ScaleFactor: 105.994703906172

State of Utah - Division of Information Technology Services

UTAH **AGRC**  
Automated Geographic Reference Center

## Printable Map

The West Coast Regional Carbon Sequestration Partnership Interactive Map

Map Data

Westcarb Interactive Map

Legend

- Producers
- Consumers
- Transportation
- Residential
- Commercial
- Industrial
- CA Oil and Gas Fields
- CA Buffer Zones

Map: 507823.27, -10902.23 - Image: 911, 147 - ScaleFactor: 105.994703906172

State of Utah - Division of Information Technology Services

UTAH AGRC  
Automated Geographic Reference Center

## Layer List

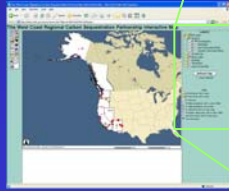
**LAYERS**

- All Layers
- Sources
  - Powerplants
  - Refineries
  - Gas Processing Plants
  - Cement and Lime Plants
- Oil and Gas
- Base Layers
- Geology
- Terrestrial
- Land Ownership

Auto Refresh

Help:

- A closed group, click to open.
- An open group, click to close.
- A map layer.
- A hidden group/layer, click to make visible.
- A visible group/layer, click to hide.
- A visible layer, but not at this scale.
- A partially visible group, click to make visible.
- An inactive layer, click to make active.
- The active layer.



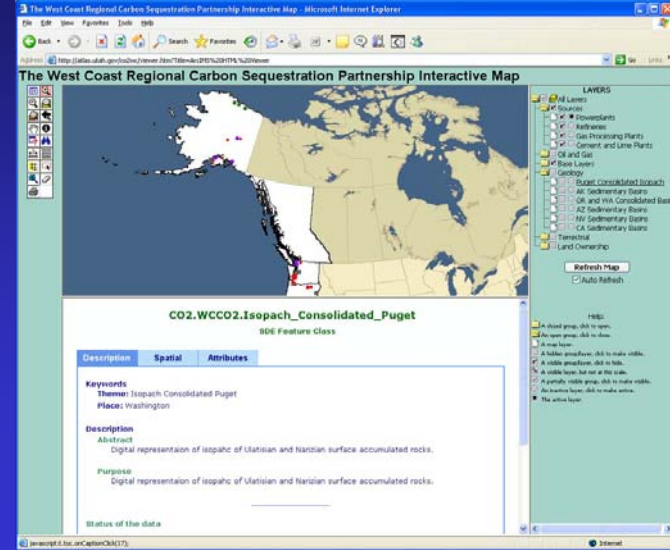
State of Utah - Division of Information Technology Services

UTAH AGRC  
Automated Geographic Reference Center

## Standard GIS Metadata

The West Coast Regional Carbon Sequestration Partnership Interactive Map - Microsoft Internet Explorer

The West Coast Regional Carbon Sequestration Partnership Interactive Map



**CO2.WCCO2.Isopach\_Consolidated\_Puget**  
SDE Feature Class

Description	Spatial	Attributes
<b>Keywords</b>		
Themen: Isopach Consolidated Puget		
Place: Washington		
<b>Description</b>		
<b>Abstract</b>		
Digital representation of isopach of Miocene and Neogene surface accumulated rocks.		
<b>Purpose</b>		
Digital representation of isopach of Miocene and Neogene surface accumulated rocks.		
<b>Status of the data</b>		

State of Utah - Division of Information Technology Services

UTAH AGRC  
Automated Geographic Reference Center

## Custom Metadata

The West Coast Regional Carbon Sequestration Partnership Interactive Map

Layers:

- All Layers
- CO2 Sources
- Basins
- Basins and Lime Plants
- Oil and Gas
- Geology
- Topography
- Land Ownership

Refresh Map

Auto Refresh

Help:

- A closed group: click to open.
- An open group: click to close.
- In the tree:
- A hidden group/icon: click to make visible.
- A visible group/icon: click to hide.
- A visible icon, but not in the tree.
- A partially visible group: click to make visible.
- An inactive icon: click to make active.
- The active layer.

Powerplants  
CO2 point sources.  
For more information: [Power Generation.doc](#) (Opens in new window)

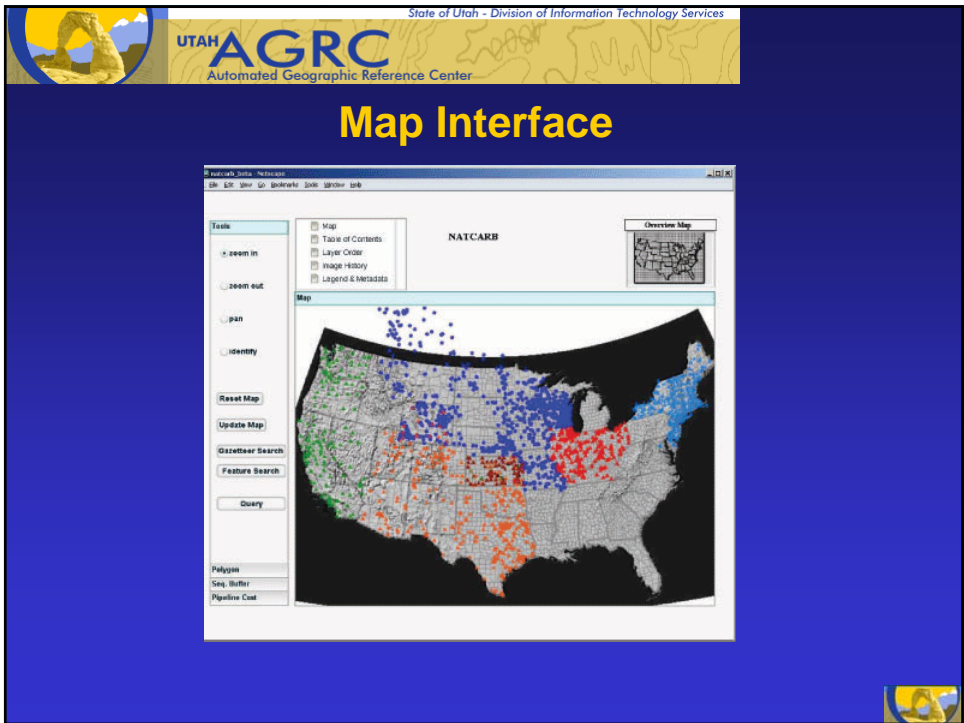
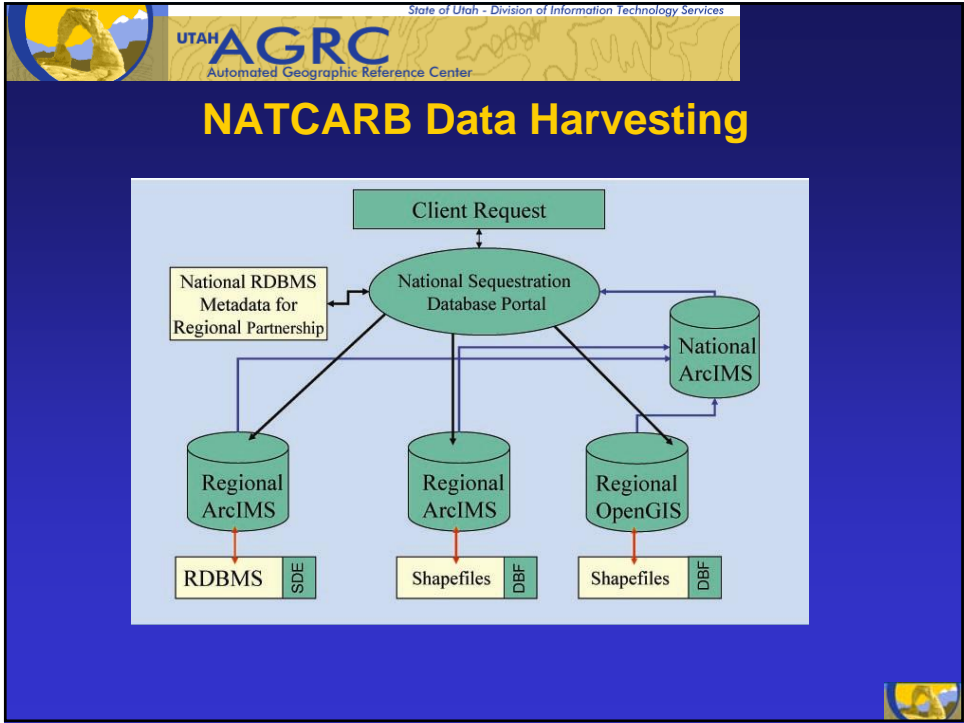
Data Contact:  
John Ruby  
Nevada Inc.  
jruby@nevadai.com

State of Utah - Division of Information Technology Services

UTAH AGRC  
Automated Geographic Reference Center

## NATCARB Portal

- Nationwide carbon atlas.
- Created and maintained by KGS
- Each partnership is responsible for its own data and metadata.
- Interface provided for the database admins to add layers and metadata.
- IMS services harvested and images drawn together.




State of Utah - Division of Information Technology Services

UTAH **AGRC**  
Automated Geographic Reference Center

## WESTCARB's Participation in NATCARB

- 7 layers are shared out to NATCARB.
- More layers to be added
- Metadata improvements
- Continued sharing



State of Utah - Division of Information Technology Services

UTAH **AGRC**  
Automated Geographic Reference Center

## Questions, Comments??

[www.westcarb.org/carbonatlas.htm](http://www.westcarb.org/carbonatlas.htm)  
[www.natcarb.org](http://www.natcarb.org)

[bbiediger@utah.gov](mailto:bbiediger@utah.gov)

