



WESTCARB Regional Partnership

WESTCARB Carbon Atlas Update

Kevin Koy, kkoy@berkeley.edu
UC Berkeley, Geospatial Innovation Facility,
Executive Director

WESTCARB Annual Business Meeting
Lodi, CA

October 24–26, 2011

WEST COAST REGIONAL CARBON SEQUESTRATION PARTNERSHIP



Geospatial Innovation Facility (GIF)



- At UC Berkeley's College of Natural Resources
- Promote geospatial technology on and off campus through:
 - Training
 - Project work
 - Seminars and Events
- <http://gif.berkeley.edu>

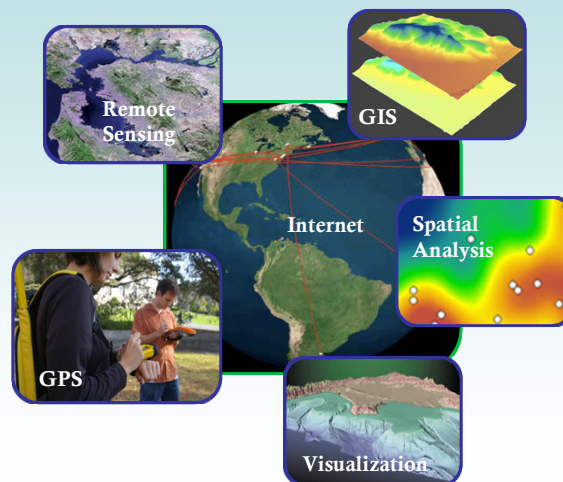
WEST COAST REGIONAL CARBON SEQUESTRATION PARTNERSHIP



Geospatial Data Dissemination

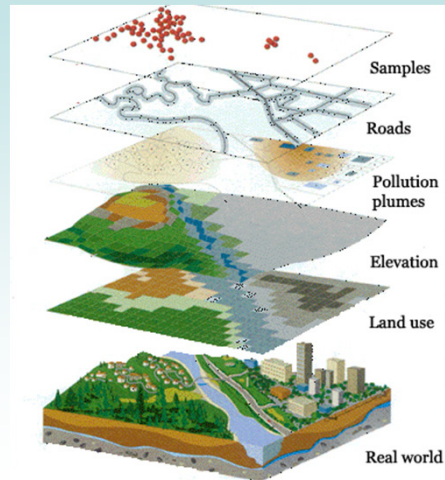
- WESTCARB data and services recently migrated from Utah to GIF
- GIF now charged with:
 - Maintaining and updating current geospatial data holdings
 - Interfacing with NatCarb to ensure compatibility between national and regional data sets
 - Developing new and improved ways to allow people to explore and analyze WESTACRB's spatial data

What is Geospatial?

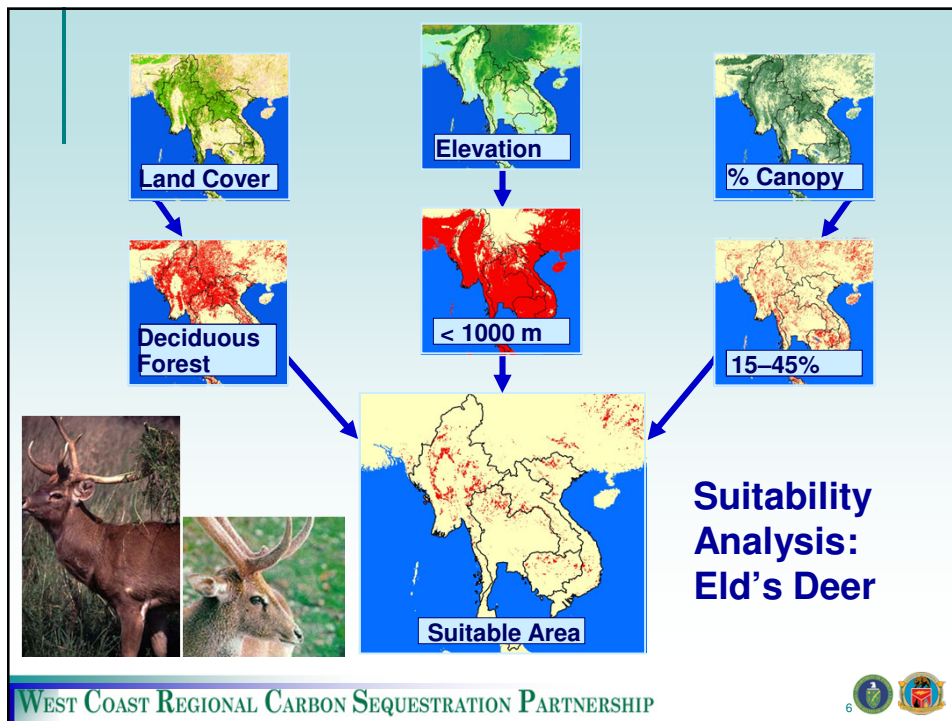


GIS: Geographic Information Systems

- Entry,
- Editing,
- Storage,
- Query,
- Retrieval,
- Transformation,
- Manipulation,
- Analysis, and
- Display of geospatial data

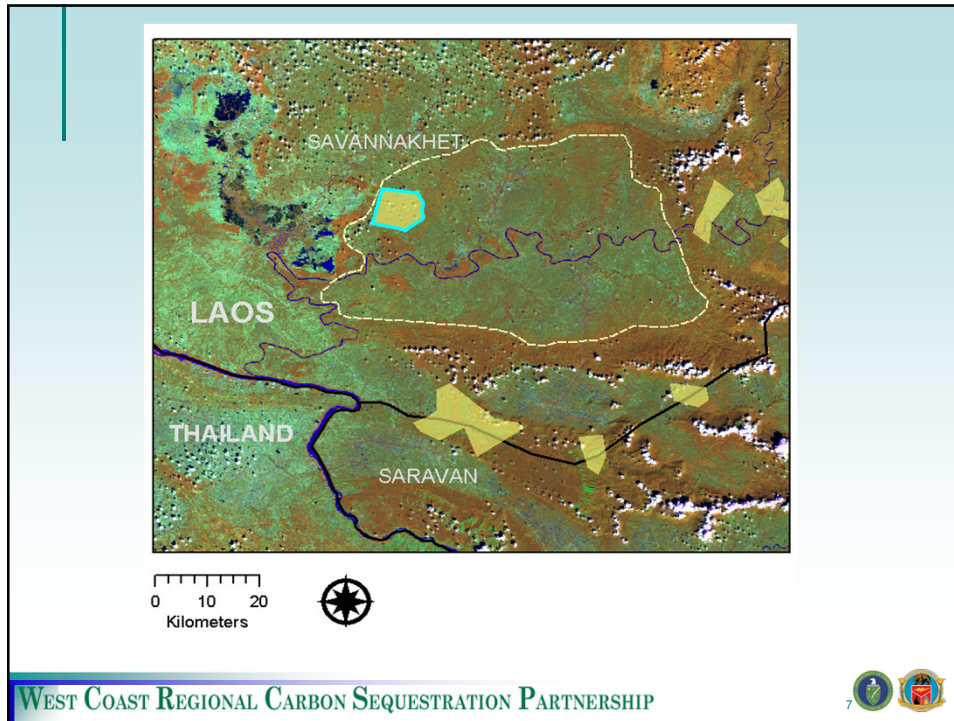


WEST COAST REGIONAL CARBON SEQUESTRATION PARTNERSHIP



WEST COAST REGIONAL CARBON SEQUESTRATION PARTNERSHIP





New WESTCARB Geospatial Data Portal

- Developing a new web interface for simple access to:
 - Predefined static maps (PDF & JPEG)
 - An online map visualization interface
 - Data access via download and ArcGIS Services

Three screenshots of the WESTCARB Geospatial Data Portal interface. The first screenshot shows a map of California with various basins highlighted in different colors: Central Basin (pink), Oroville Basin (green), Ventura Basin (blue), and Los Angeles Basin (purple). A legend on the left identifies these basins and also shows symbols for International Boundary, State Boundary, and Interstate/Highway. The second screenshot shows an interactive map of the same region. The third screenshot shows a 'Data Access' panel with a list of data layers and their corresponding web services.

Map Gallery
View and download a variety of maps highlighting WESTCARB data in PDF or JPEG formats

Interactive Map
Access an interactive web map to explore WESTCARB data online

Data Access
Access WESTCARB data in different formats including downloadable GIS files and ArcGIS web services.

ArcGIS Services

- Leveraging ArcGIS Server technology, data will be:
 - Easily accessible via ArcGIS.com or ArcGIS Desktop
 - Able to be cross referenced with other spatial data
 - Able to be adapted to new custom maps for print



Demo

