



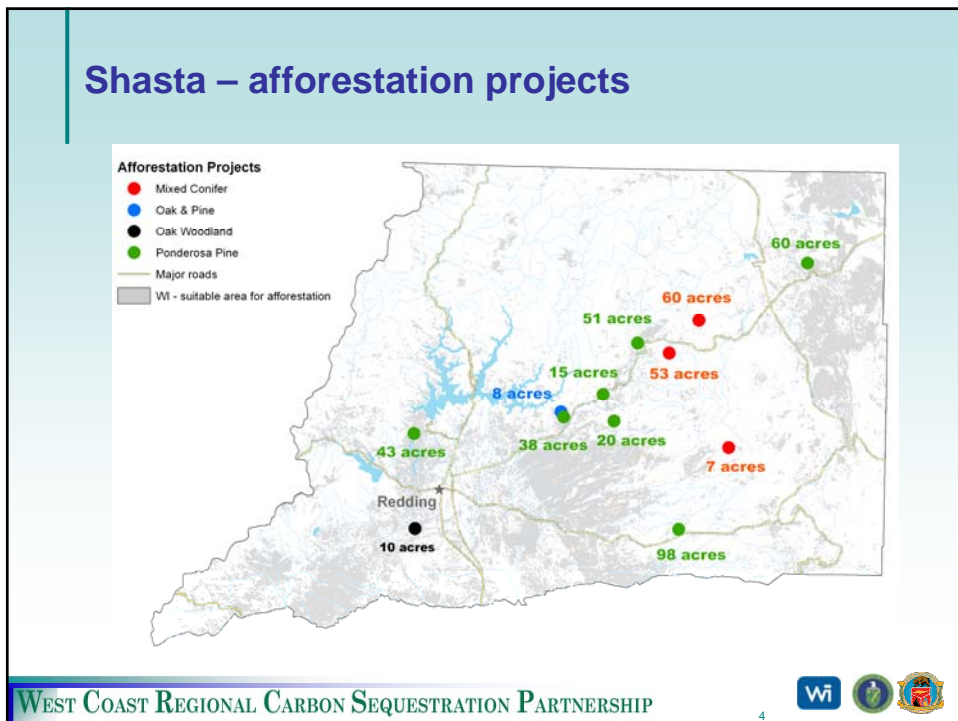
WESTCARB Annual Business Meeting

Shasta Afforestation

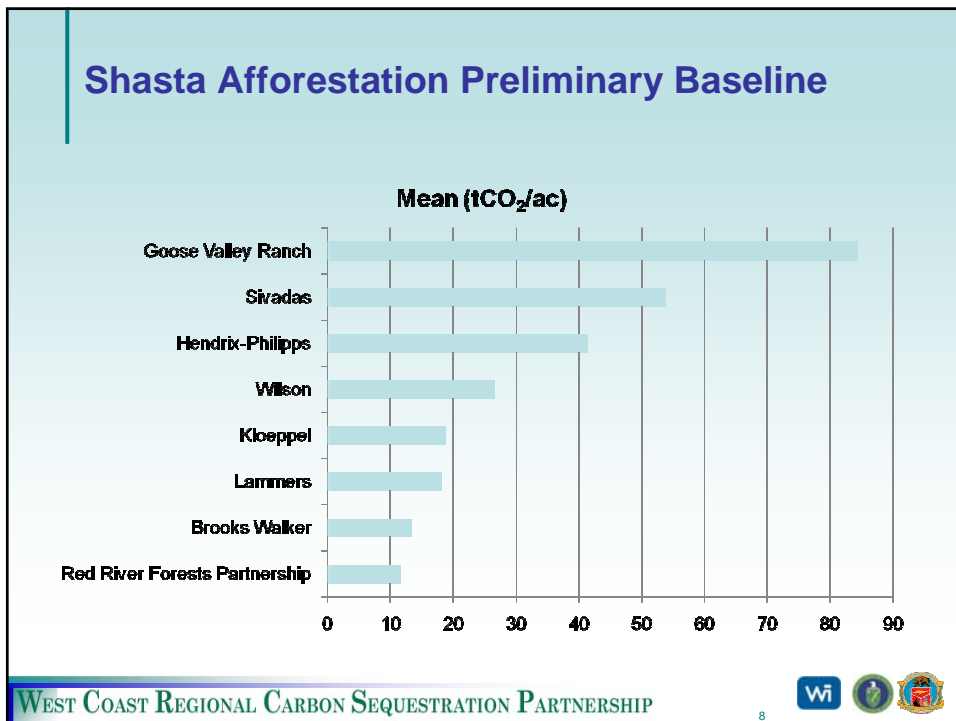
Katie Goslee
WESTCARB Terrestrial Project Manager
Winrock International
kgoslee@winrock.org

Scottsdale, AZ
September 15-17, 2009

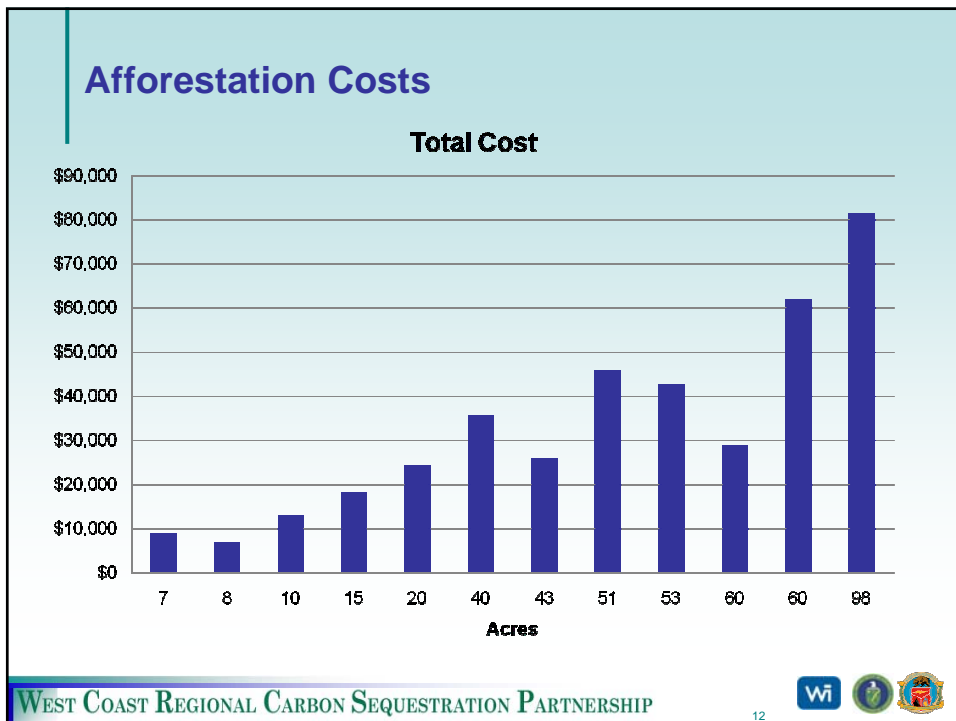
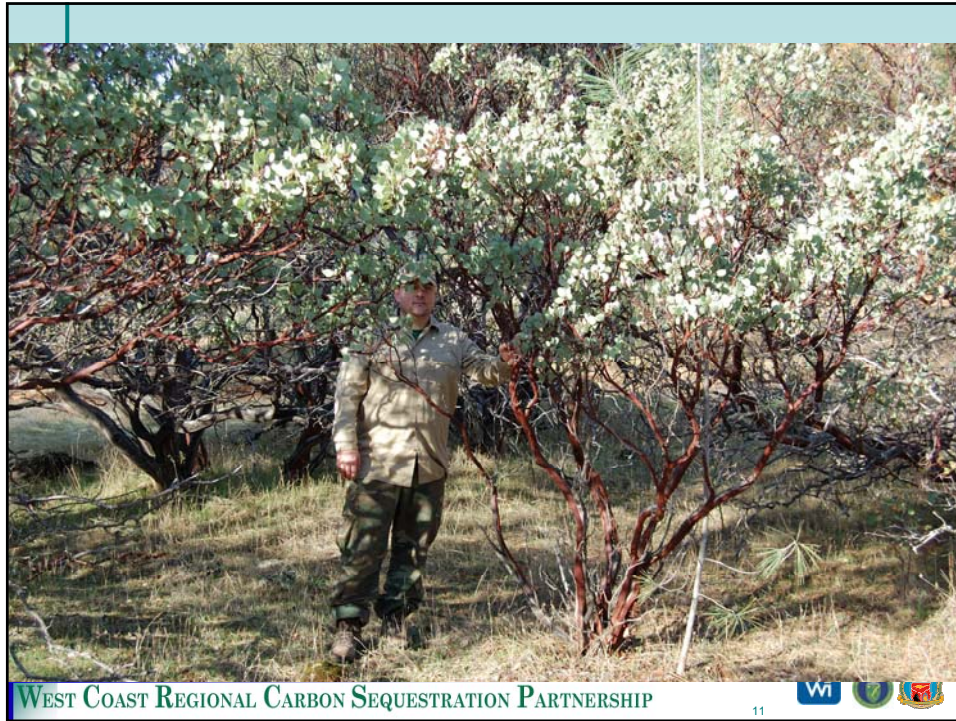
















Goslee p.

Itemized costs

Project	Acreage	Seedlings /acorns	Site prep	Planting	Post tx spraying	Total cost	Cost per acre
BLM	10	\$1,300		\$8,660	\$3,200	\$13,160	\$1,316
Wilson	15	\$755	\$9,725	\$4,693	\$3,025	\$18,198	\$1,213
Sivadas	40	\$1,890	\$21,805	\$7,210	\$4,900	\$35,805	\$895
Frase	43	\$1,980	\$11,235	\$7,517	\$5,080	\$25,812	\$600
Lakey	60	\$1,840	\$6,338	\$11,967	\$8,775	\$28,919	\$482
Goose Valley	60	\$3,640	\$26,280	\$6,370	\$25,668	\$61,958	\$1,033





WEST COAST REGIONAL CARBON SEQUESTRATION PARTNERSHIP

19



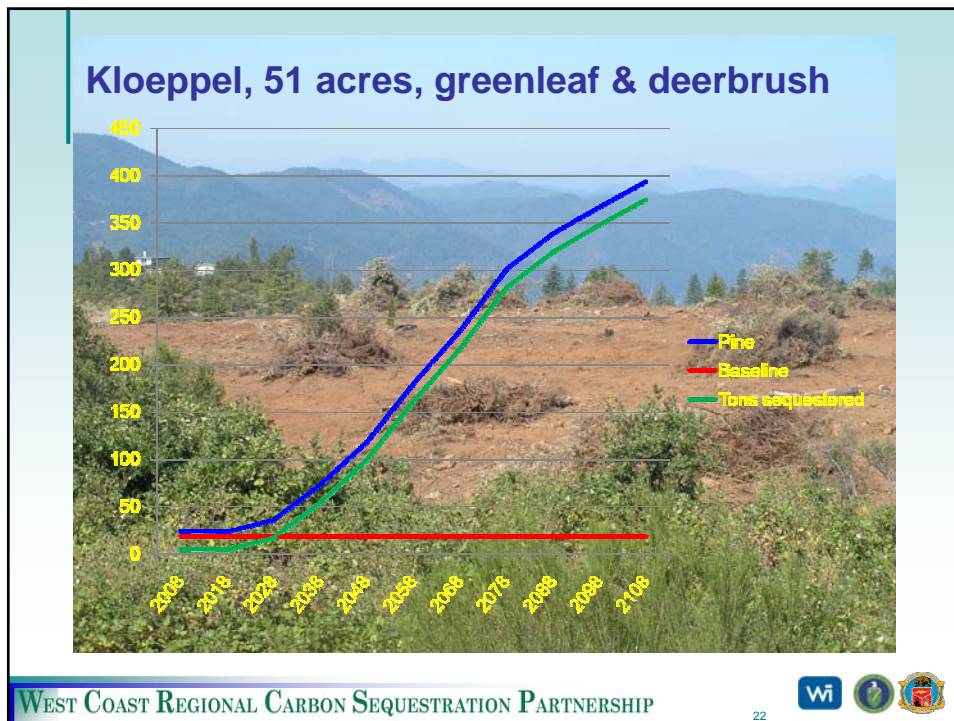
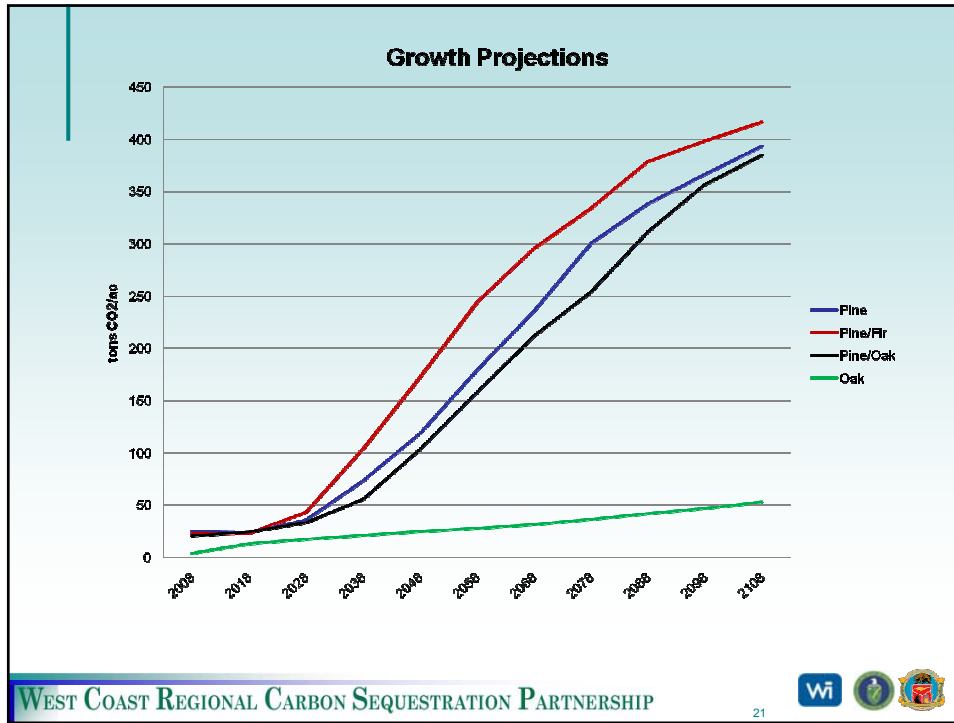
Growth projections

Year	tons CO ₂ /ac			
	Pine	Pine/Fir	Pine/Oak	Oak
2008	25	23	21	4
2018	24	23	24	13
2028	36	43	33	17
2038	73	104	55	21
2048	118	173	103	25
2058	179	244	158	28
2068	235	296	212	32
2078	300	334	254	37
2088	338	379	311	42
2098	366	398	357	47
2108	393	417	385	53

WEST COAST REGIONAL CARBON SEQUESTRATION PARTNERSHIP

20





Next steps

- Accurate baseline for each project
- Projections for each project
- Offsets produced
- Cost/benefit analysis



Contact info

Katie Goslee
Winrock International
(510) 845-0968
kgoslee@winrock.org

